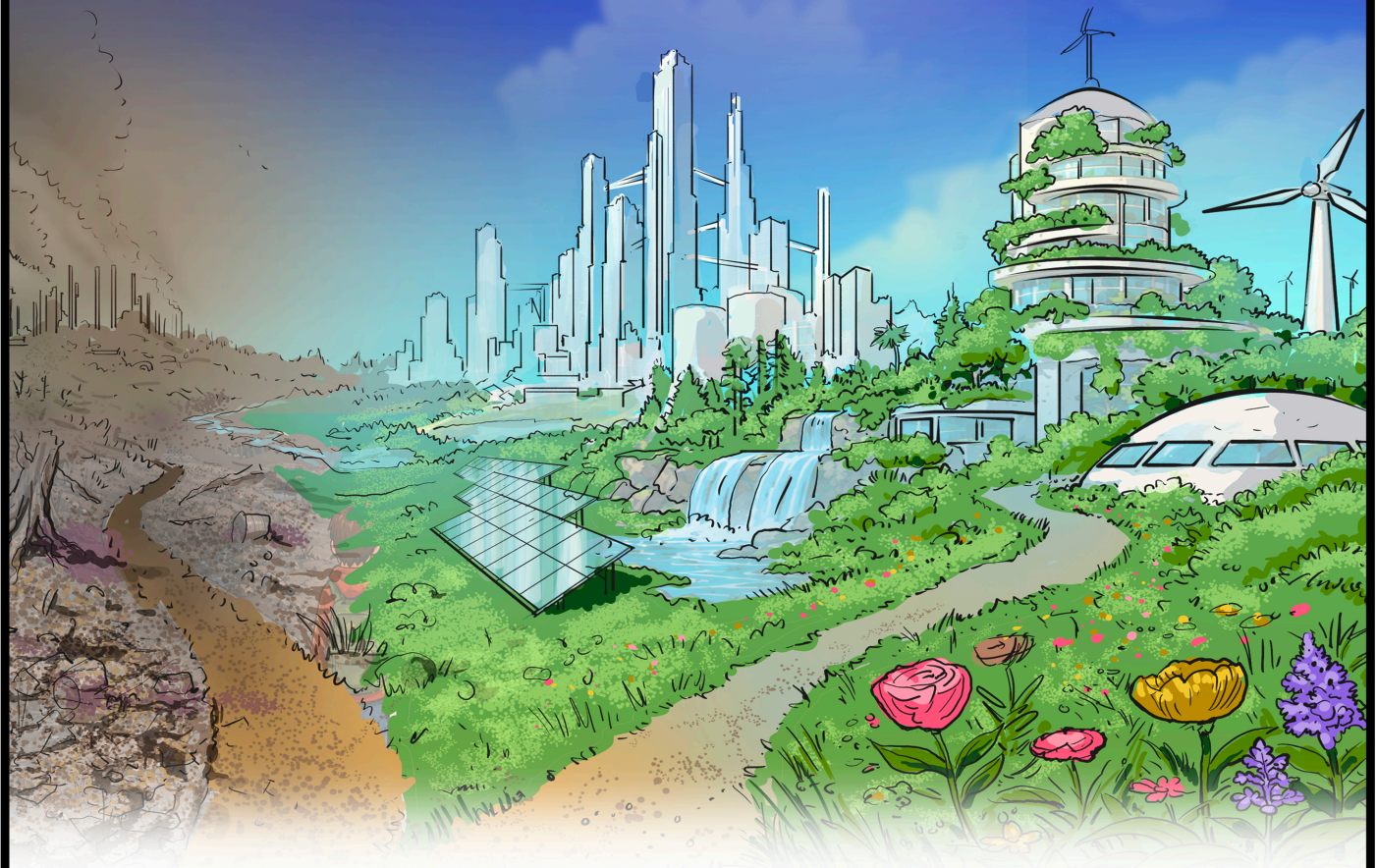


Reimagining Tomorrow: Sustainable Climate Solutions



A sustainable future of human prosperity and an ecologically sustainable vibrant planet are not only possible but inseparable.

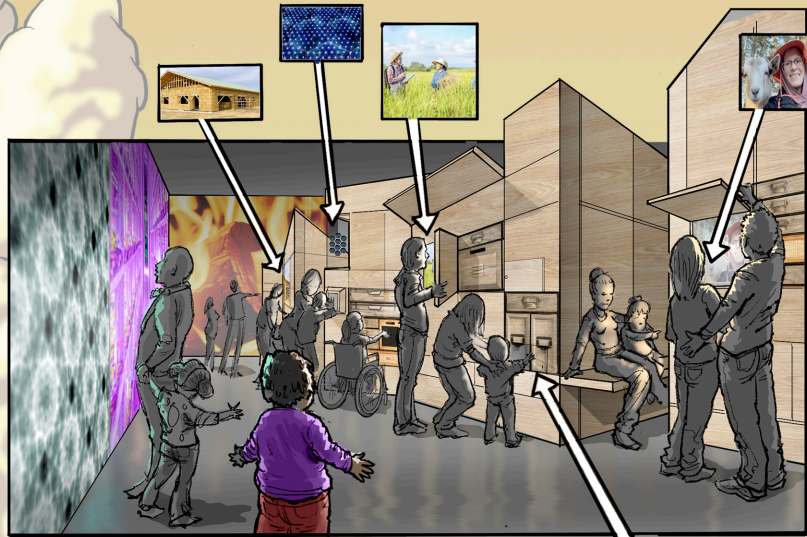
— Inspired by An Ecomodernist Manifesto

Imagine visitors leaving a climate exhibit feeling energized, empowered, and ready to act. Inspired to shift the climate change narrative from doom-and-gloom to absolute optimism, The Pole Creek Foundation and Panorama partnered with two award-winning experiential design firms: Thinc Design and Quatrefoil Associates.

The result? Two groundbreaking, flexible, and immersive experiences which will be available for rent to museums, science centers, events, and festivals across the United States. While designed to complement each other for a blockbuster, grounds-wide takeover, these two experiences can be fully independent, depending on your space and goals.

Welcome to a new climate experience.

Reimagining Climate Futures

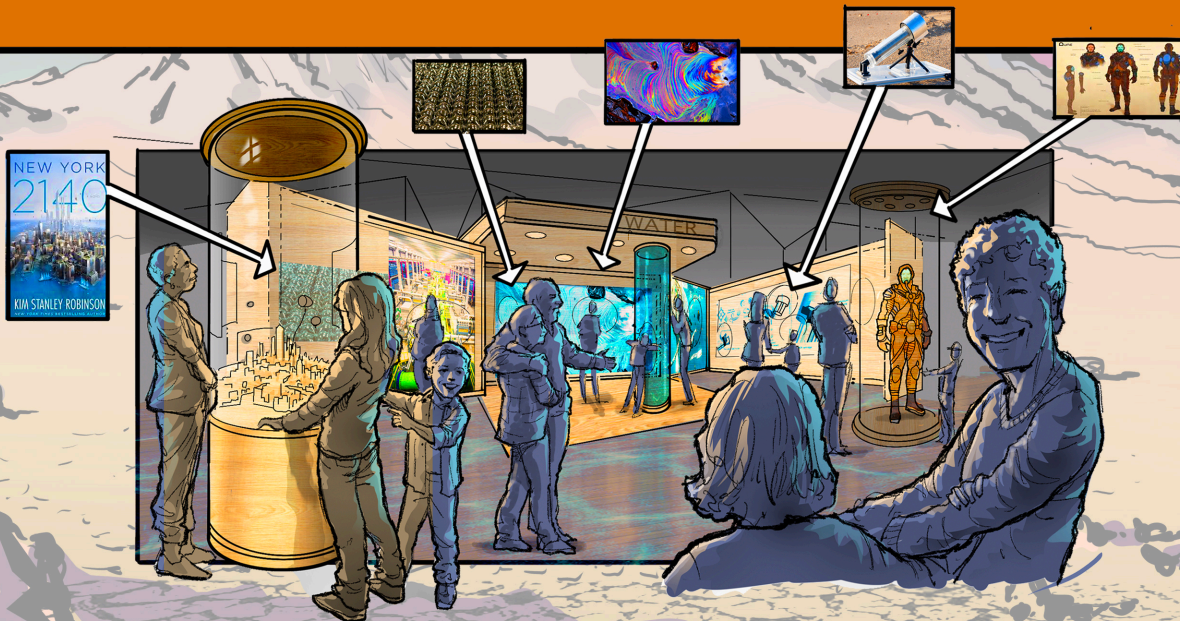


What if many possible futures are already here? What if the tendrils of possibility are unfurling throughout our lives, offering us moments of what could be?

In this exhibit, we bring the threads of possible futures alive—because they're already here, shaping our world and how we understand ourselves in it.

Hear the voices of a living climate future. Then explore the imagined worlds of tomorrow brought to life today by those at the leading edge of our collective imaginations: the scientists, the social innovators, and the speculative fiction creators.

Discover our brilliant futures—and how we can reinforce the worlds we want.



Contact us to learn more!

The exhibit is in the early stage of development. If you would like to know more, please reach out!

Tom Hennes | tomh@thincdesign.com

Pam Schwarz | pams@thincdesign.com

www.thincdesign.com

Thinc

PROJECT BLUE MARBLE

A Public, Open-Air Exhibition That Reframes the Discussion of Climate Change

We need a different way of talking about climate.

This exhibition will move beyond assigning blame and crippling doomsday scenarios. Instead, it will focus on practical insights like cost savings, personal well-being, and the power of collective action.

Components

- Select elements will be tailored to three audience types: urban, suburban, or rural.
- Dedicated local section will allow host venues to customize their stories and play a role in showcasing community content.
- Modular series of interactive installations covering roughly 2,500 square feet.
- Eye-catching displays draw directly from local climate conditions.



Whether people stumble upon the exhibition on a small-town street or an urban plaza, *Project Blue Marble* bases climate understanding in the places people know and the systems they rely on every day. At the same time, the exhibition recognizes climate anxiety and helps turn uncertainty into individual and community action.

Visitors will leave seeing **possibility**, not paralysis.

Contact Quatrefoil Associates to learn more!

We are in the early stage of designing this exhibit. Let us know if it would be a good fit in your city or town.

Michael Burns | mwburns@quatrefoil.com See more of our work at www.quatrefoil.com!

Pam Elbe | pamela@quatrefoil.com



QUATREFOIL
ASSOCIATES